

- KEY:**
- (A) Link path through reserve - over SW chambers
 - (B) Transformer w/ planting around to screen



SITE LANDSCAPE ARCHITECTS ^

www.sitela.co.nz . 021838855 . Queenstown

1:400 @ A3
scale

A 05.04.22 . Concept for scheduling - QLDC review
- 23.03.22 . Draft for review

revisions

Universal Developments: Longview Hawea
Lot 705 - Park Plan

CONCEPT

drawing no.	revision
276_SK-019	A



SITE LANDSCAPE ARCHITECTS ^

www.sitela.co.nz . 021838855 . Queenstown

1:200 @ A3 scale

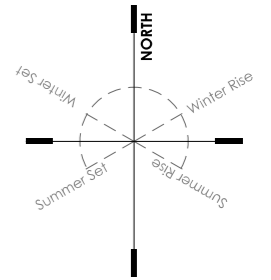
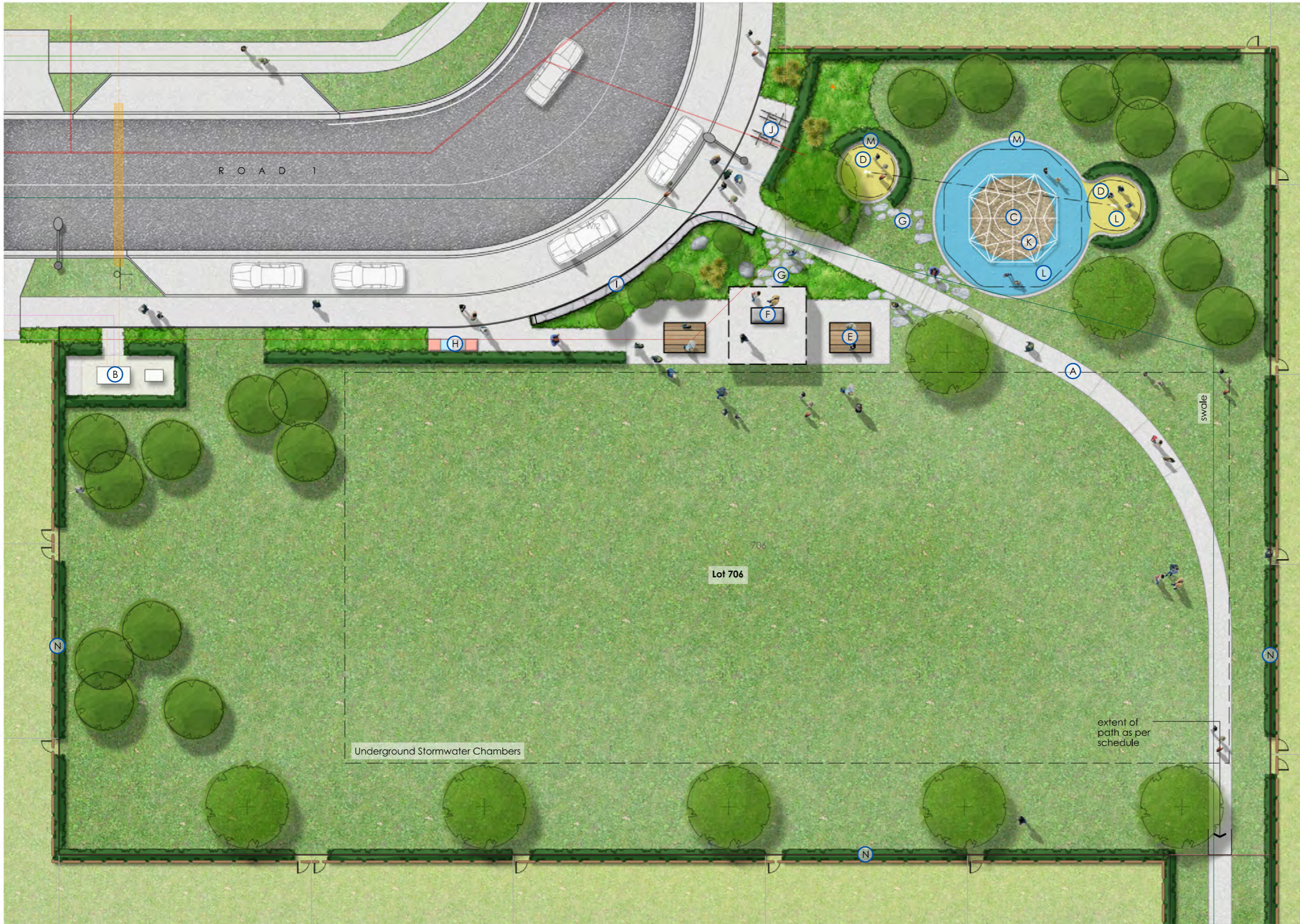
- D 05.04.22 . Concept for scheduling QLDC review
- C 23.03.22 . Draft for review
- B 15.03.22 . Draft for review
- A 08.03.22 . Draft for review
- 09.02.22 . Draft for review

revisions

Universal Developments: Longview Hawea
 Lot 705 - Playground Plan

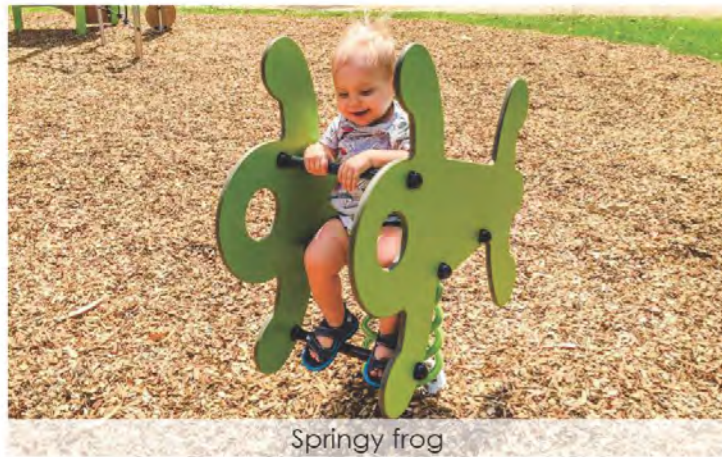
CONCEPT

drawing no.	revision
276_SK-020	D



KEY:

- (A) Link path through reserve - over SW chambers
- (B) Transformer w/ hedging around to screen
- (C) GS-W804 Climbing Net
- (D) J3410 Talk Tubes
- (E) Picnic benches
- (F) QLDC standard BBQ shelter
- (G) Schist slabs through garden/lawn
- (H) QLDC standard rubbish / recycling bins
- (I) Stone wall with park sign
- (J) Bike stands
- (K) Mulch safety fall - recessed 50mm from surrounding edge
- (L) Rubber safety matting
- (M) 200mm concrete edging
- (N) Private lots to have low hedging only to reserve and low fencing on inside of hedging



Springy frog



Double cableway flying fox



Cabin tower



QLDC standard rubbish / recycling bins



Speed gyro roundabout



Duo



3-bay kryptonite swing



Ixo monkey bar



Curved bench



Rubber matting and bark



Climbing cube



Cube benches



Talk tubes



QLDC standard BBQ shelter



Climbing net